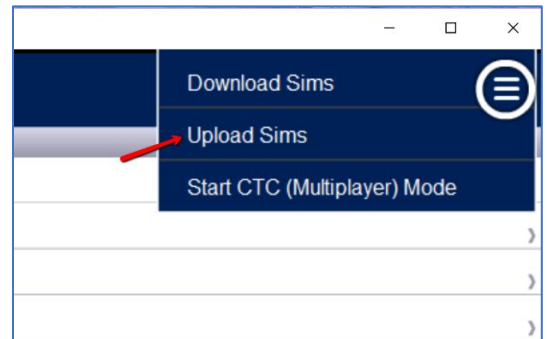


How to Upload Sims into SimCloud

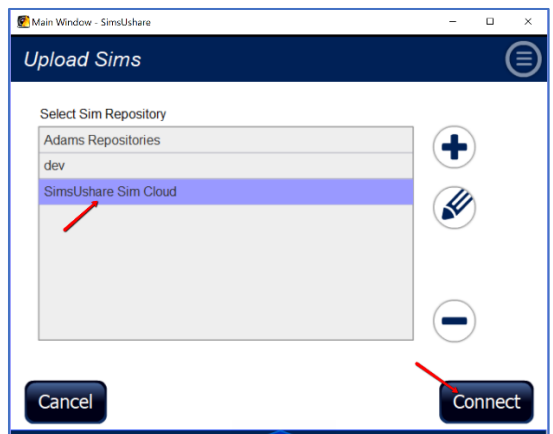
The Sim Cloud is a private storage area for your simulations, which gives you the ability to easily share simulations with your Department. You can access (download and upload) your simulations either through the SimsUshare app or through the CTC Web app (<https://ctc.simsushare.com>). For any questions, please contact us at +1.215.627.8146 or support@simsushare.com.

Open the SimsUshare app and click PLAY or EDIT.

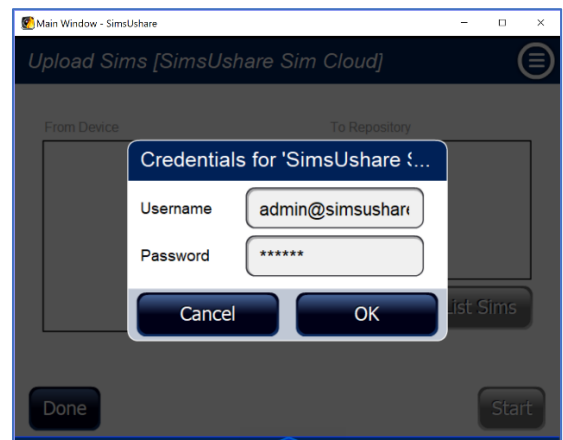
In the menu, choose “Upload Sims”



Select the Sim Cloud server, then press “Connect”



SimsUshare will ask you to enter your CTC credentials (login email and password)



In the box on the left-hand side of the screen will be the simulations stored on your device.

To upload a sim, click on the sim name on the left-hand box, then press the “>” center button. The sim will appear in the right-hand box. Add as many simulations as you’d like to transfer.

Clicking on the “List Sims” button will bring up a box listing the simulations currently in your Sim Cloud storage.

If you have selected a sim that you already have in your Sim Cloud, the system will ask you whether you want to: overwrite the sim in your Sim Cloud, or, create a copy. Select which option you would like.

When you are finished selecting the simulations to download, press “Start”. The system will package and transfer each sim. When it is finished, it will tell you that the transfer is complete. Press OK to return to the PLAY or EDIT screens.

