

Copying and Pasting Effects

Copy effects that you want to use multiple times in either the same simulation or across simulations

To copy a single effect, go to Edit simulation then select the effect.
Note: SimsUshare preserves any changes you made to the effect.



In the menu, select **“Copy Effect”** (or press Ctrl-C [Windows] or Command-C [Mac]).



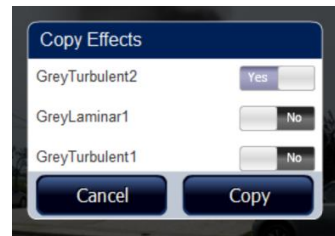
Go to the location in which you want to paste the effect. In the menu, choose **“Paste Effect”**.



To copy multiple effects into your clipboard, instead of editing each element, choose **“Copy Effects”** from the menu on the main edit screen.



A box will appear asking which effects to copy. Select each effect (Yes) you want to copy into your clipboard.



Go to the location in which you want to place the effects and select **“Paste Effects”** from the menu.

