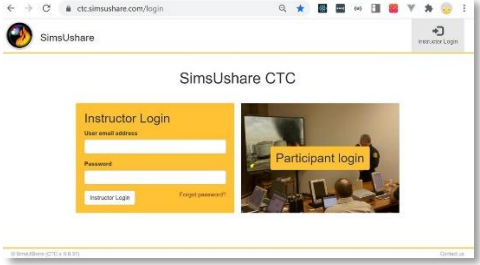
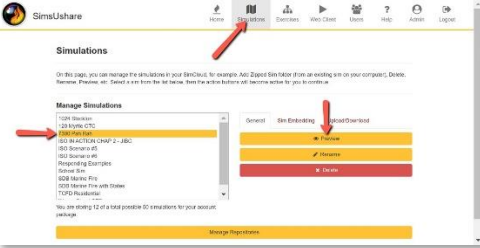
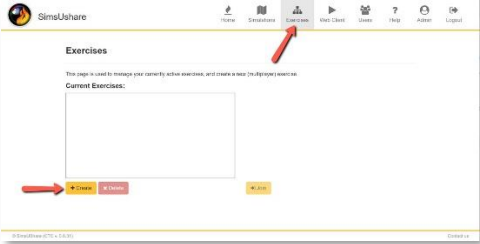
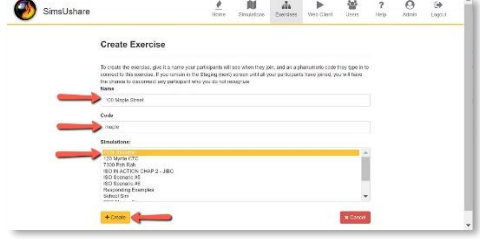
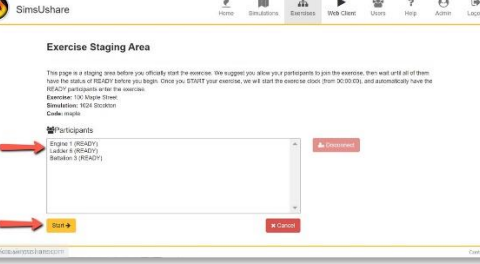


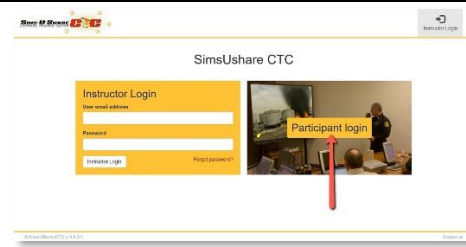
## Start a CTC Exercise

### How to launch a new multi-player exercise with the CTC.

<p>Open an internet browser (except Microsoft Internet Explorer), and go to <a href="https://ctc.simsushare.com">https://ctc.simsushare.com</a>. Under "Instructor Login", enter your username and password.</p>	
<p>Click on the Simulations tab to see a list of all simulations available for exercises in your CTC account. To preview a simulation, double-click on it or press Preview.</p>	
<p>Click on the Exercise tab to start an exercise. (A list will appear showing any exercise currently in progress.) Press the Create button to create a new exercise.</p>	
<p>(a) Type in a name for the exercise (b) enter a one-time code that participants will use to join the exercise, (c) select which simulation you want to use, then press Create.</p>	
<p>You are taken to the Staging area as your participants join the exercise. You may start the exercise at any time, by pressing Start.</p>	

Your participants may join the exercise by using (a) an internet browser or (b) through the SimsUshare app if it is installed on their device.

(a) To use an internet browser, tell your participants to open it and go to <https://ctc.simsushare.com>, then press the “Participant Login” button.



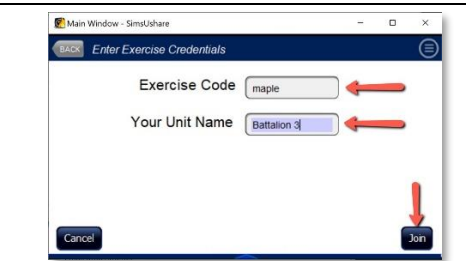
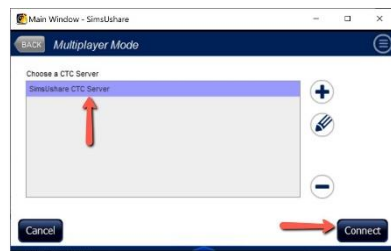
Have your participants type in (a) the name designation you want them to use which will appear in the instructor view, and (b) the one-time code you created, then press Create. If you have not started the exercise already, the participant screen will tell them they are waiting for the controller. If you have started it already, the participant will be placed at the first location in the simulation.



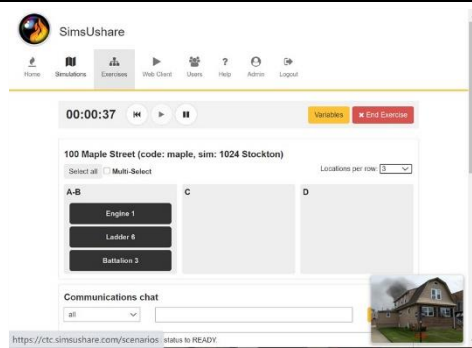
(b) If your participants have the SimsUshare app on their computer, they can join an exercise from the main screen menu by choosing “Start CTC (Multiplayer) Mode”



Next, they choose “CTC Server” and press “Connect”. They enter the unit name you want them to use and the one-time exercise code. SimsUshare will download the simulation to the app automatically. If the sim is already present, you can press “Keep” to skip the download.



Once you start the exercise, you will see the instructor dashboard with all the locations, participants, and location preview.



Your participants will see their corresponding view and can move independently if so designed in the simulation



(web) participant view