

Preparing the SimsUshare On-Site Kit for Use

Open the kit and remove the router and server (laptop) from the kit center, then plug them both into power outlets.



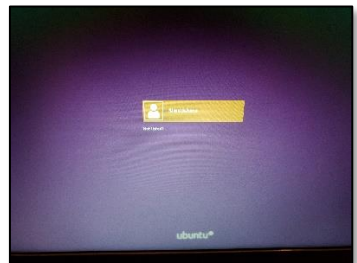
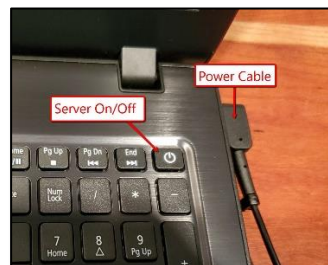
Plug the blue ethernet cable into any of the four blue slots in the back of the router. If you want to provide internet to the devices connected to the kit (not required though), plug in the ethernet cord from your network (here in yellow) into the single yellow port on the back of the router.



Plug the other end of the blue ethernet cable into the server (laptop) port on the left side of the laptop.



Press the On/Off button on the server to start it. The screen should light up and in less than a minute, you should see a login screen.



You do not need to do anything further, i.e., you do not need to log in (unless you'd like to, for example, to use the server as an additional participant, a sim developer, or an instructor (using the Firefox browser). After a few seconds, you should see a green light underneath the port into which you plugged the ethernet cable on the router.



The server is designed to start the SimsUshare CTC automatically, without you having to do anything. However, you should wait for about 2 minutes when first powering up the server, to give it time to start the system.